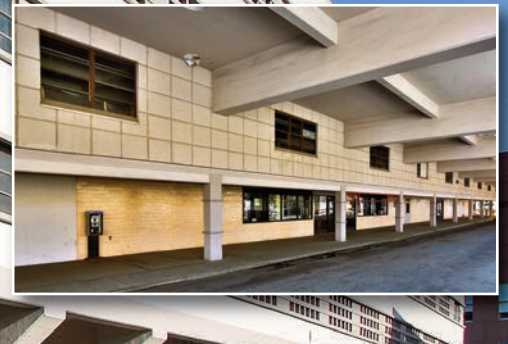


**Not Just Any Property – a TREFZ Property!**



## THE TRANSIT CENTER 70 State Street Bridgeport, Connecticut

- Five levels of parking.
- Private covered caseways on ground floor with drive-thru potential.
- Perfect for retail bank or pharmacy.
- Security service and direct building access.
- Easy access to I-95, Merritt Parkway, Route 8, Train, Bus and LI Ferry Terminals.

*Currently Available:*

- Ground floor – 11,332 sq ft
- Second floor – 11,834 sq ft



*For more information  
contact: Karolyn Egbert,  
(203) 367-3621 X 309  
karolyn@gotrefz.net*